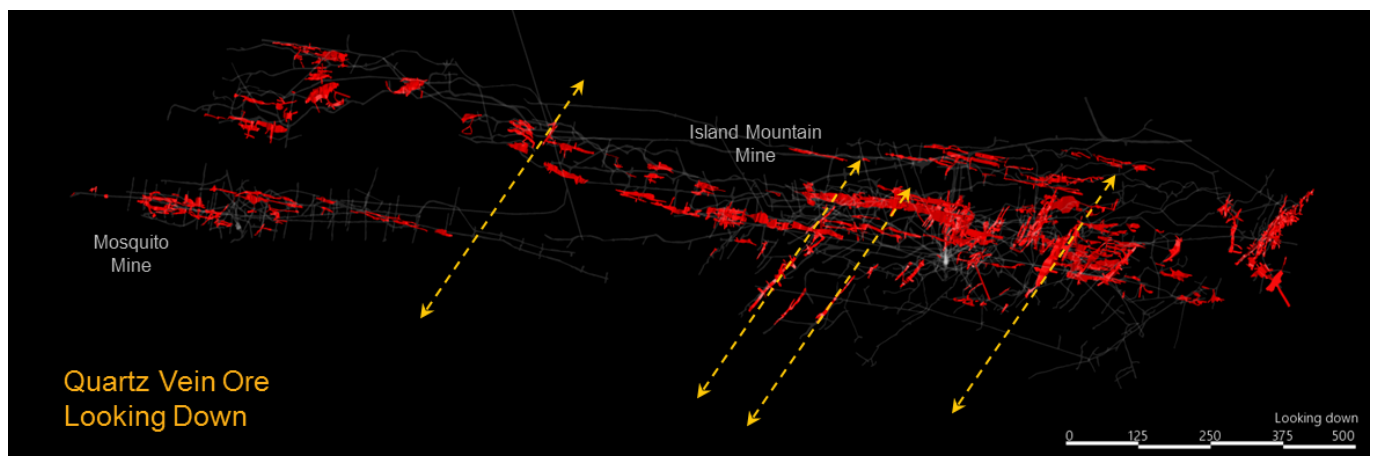


# Barkerville Gold Intersects 10.85 g/t Au over 10.75 Metres at Valley Zone

**Barkerville Gold Mines Ltd. {TSX.V: BGM}** announced additional drilling results from the ongoing 130,000 metre Phase II Island Mountain exploration drilling program at the Company's flagship Cariboo Gold Project.

The Company is currently exploring and delineating the Valley Zone with four drill rigs.



## **Veining Extended Below Former Aurum and Cariboo Gold Quartz Mines**

**TORONTO, ON** – May 3<sup>rd</sup>, 2017 – **Barkerville Gold Mines Ltd. {TSX.V: BGM}** is pleased to announce additional drilling results from the ongoing 130,000 metre Phase II Island Mountain exploration drilling program at the Company's flagship Cariboo Gold Project.

The Company is currently exploring and delineating the Valley Zone with four drill rigs. Detailed drilling results, a drill hole location plan map, vertical section and longitudinal section are presented at the end of this release.

### **New Veining Intersected at Valley Zone**

Located in the low-lying area between Island and Cow Mountains, drillhole CM-17-011 intersected new veining grading **10.85 g/t Au over 10.75 metres** only 70 metres vertically below surface. On the same drill section, drillhole CM-17-013 intersected veining grading **7.96 g/t Au over 5.80 metres** and a second wider vein stockwork grading **6.41 g/t Au over 16.75 metres**. The latter intersections are situated 50 and 75 metres below CM-17-011 respectively. Further downhole at a vertical depth of 250 metres below surface, CM-17-013 intersected another veining stockwork averaging **6.57 g/t Au over 14.60 metres**.

Drillhole CM-17-014 also intersected numerous vein swarms, most notably **11.98 g/t Au over 4.35 metres**, 350 metres below surface in the deepest portion of the **Shaft Zone**. Apart from previously reported drillhole CM-17-012 which intersected **6.62 g/t Au over 5.85 metres**, no other drilling later than 1960 occurs in this area and as such is open for expansion in all directions. The deepest intersection to date on the Cariboo Gold Project (CM-17-014), is now 160 metres below the deepest levels of the former Aurum Mine at a vertical depth of 540 metres below surface grading **16.70 g/t Au over 0.95 metres**.

### **About the Phase II Program**

The 130,000 metre 2017 Phase II exploratory and delineation drill program on Island Mountain is intended to determine the extent of the vein systems that were historically never explored, and is aimed at discovering new vein systems and sulphide replacement bodies that will ultimately inform a maiden resource at Island Mountain.

Four drill rigs are currently delineating additional mineralization below the former Aurum and Cariboo Gold Quartz Mines which have never been explored since mining operations ceased circa 1960.

### **Qualified Persons**

Exploration activities at the Cariboo Gold Project are administered on site by the Company's Exploration Manager, Maggie Layman, P.Geol. As per National Instrument 43-101 Standards of Disclosure for Mineral Projects, Paul Geddes, P.Geol. Vice President Exploration, is the Qualified Person for the Company and has prepared, validated and approved the technical and scientific content of this news release. The Company strictly adheres to CIM Best Practices Guidelines in conducting, documenting, and reporting its exploration activities on the Cariboo Gold Project.

### **Quality Assurance – Quality Control**

Once received from the drill and processed, all drill core samples are sawn in half, labelled and bagged. The remaining drill core is subsequently stored on site at the Company's secure facility in Wells, BC. Numbered security tags are applied to lab shipments for chain of custody requirements. The Company inserts quality control (QC) samples at regular intervals in the sample stream, including blanks and reference materials with all sample shipments to monitor laboratory performance. The QA/QC program was designed and approved by Lynda Bloom, P.Geol. of Analytical Solutions Ltd., and is overseen by the Company's Qualified Person, Paul Geddes, P.Geol. Vice President Exploration.

Drill core samples are submitted to ALS Geochemistry's analytical facility in North Vancouver, British Columbia for preparation and analysis. The ALS facility is accredited to the ISO/IEC 17025 standard for gold assays and all analytical methods include quality control materials at set frequencies with established data acceptance criteria. The entire sample is crushed and 250 grams is pulverized. Analysis for gold is by 50g fire assay fusion with atomic absorption (AAS) finish with a lower limit of 0.01 ppm and upper limit of 100 ppm. Samples with gold assays greater than 100 ppm are re-analyzed using a 1,000g screen metallic fire assay. A selected number of samples are also analyzed using a 48 multi-elemental geochemical package by a 4-acid digestion, followed by Inductively Coupled Plasma Atomic Emission Spectroscopy (ICP-AES) and Inductively Coupled Plasma Mass Spectroscopy (ICP-MS).

For further information on Barkerville Gold Mines Ltd. please contact:

### **Chris Lodder**

President & Chief Executive Officer  
155 University Avenue, Suite 1440  
Toronto, Ontario, Canada

