

# G2 Goldfields Drills 76m @ 1.5 g/t Au and 3m @ 12.5 g/t Au

## G2 Goldfields (TSX: GTW0)

Announced diamond drilling results returning significant widths of near surface gold mineralisation in the initial first pass drilling program at the 8,358-acre Peters Mine Property, Guyana.



	<b>G2 Goldfields</b>	<b>TSX: GTW0</b>
	<b>Stage</b>	<b>Development + Exploration</b>
	<b>Metals</b>	<b>Gold</b>
	<b>Market cap</b>	<b>C\$717m @ C\$3.19</b>
	<b>Location</b>	<b>Guyana</b>
	<b>Website</b>	<a href="https://g2goldfields.com">https://g2goldfields.com</a>

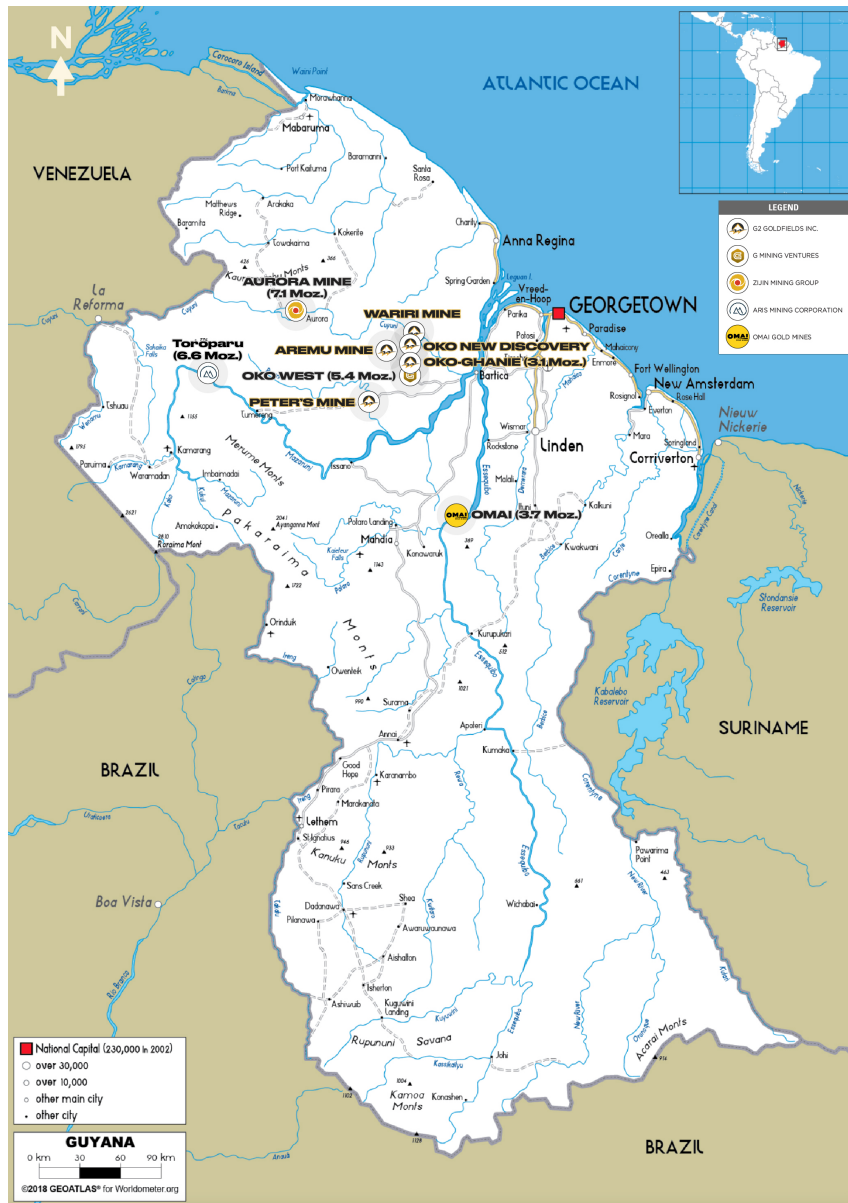
# G2 Goldfields Drills 76m @ 1.5 g/t Au and 3m @ 12.5 g/t Au in Scout Drilling at Peters Mine, Guyana

TORONTO, May 13, 2025 (GLOBE NEWSWIRE) – **G2 Goldfields Inc.** (“G2” or the “Company”) (TSX: GTW0; OTCQX: GUYGF) is pleased to announce diamond drilling results returning significant widths of near surface gold mineralisation in the initial first pass drilling program at the 8,358-acre Peters Mine Property, Guyana.

The Peters Mine Property is part of a regional portfolio of gold properties in the historic Oko-Aremu-Peters Mine district, Guyana.

The project lies approximately 35 km southwest of the Company’s flagship OKO property which hosts mineral resources of **1.5 million ounces of gold** Indicated and **1.6 million ounces of gold** Inferred (see press release dated March 10, 2025).

**FIGURE 1 – Country Map**



## History of the Property

The Peters Mine was discovered in 1902 and subsequently developed as an underground mine, becoming operational in 1905. Between 1905 and 1909, 41,915 ounces of gold were produced primarily from shallow underground workings within 70 meters of surface. Head grades were approximately 41 g/t Au.

The primary purpose of the recent drill program was to provide vital geological and structural information in several areas of known gold mineralisation. Results are tabulated in Table 1.

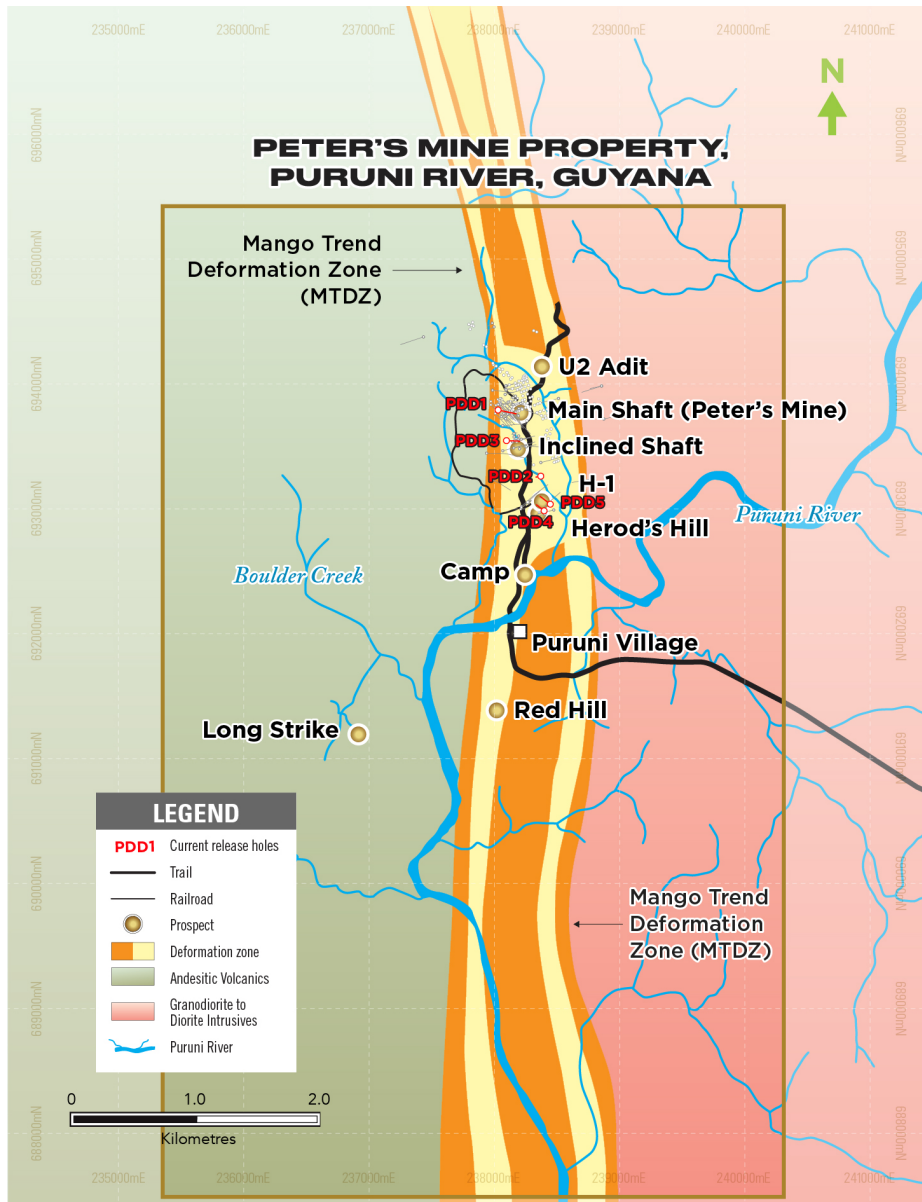
**TABLE 1 – Assay Results**

HOLE ID	FROM	TO	INT (M)	AU (G/T)
<b>PDD1</b>	<b>62.0</b>	<b>138.0</b>	<b>76.0</b>	<b>1.5</b>
<i>Incl.</i>	<i>115.0</i>	<i>131.5</i>	<i>16.5</i>	<i>5.0</i>
<b>PDD3</b>	<b>133.0</b>	<b>175.0</b>	<b>42.0</b>	<b>0.8</b>
<i>Incl.</i>	<i>136.0</i>	<i>143.5</i>	<i>7.5</i>	<i>2.5</i>
<b>PDD4</b>	<b>9.2</b>	<b>34.0</b>	<b>24.8</b>	<b>0.4</b>
PDD4	49.5	57.0	7.5	1.1
<b>PDD5</b>	<b>147.0</b>	<b>150.0</b>	<b>3.0</b>	<b>12.5</b>

*Notes to Table 1: Widths are drill indicated core length as insufficient drilling has been undertaken to determine true widths at this time. Average grades are calculated with uncapped gold assays, as insufficient drilling has been completed to determine capping levels for higher grade intercepts.*

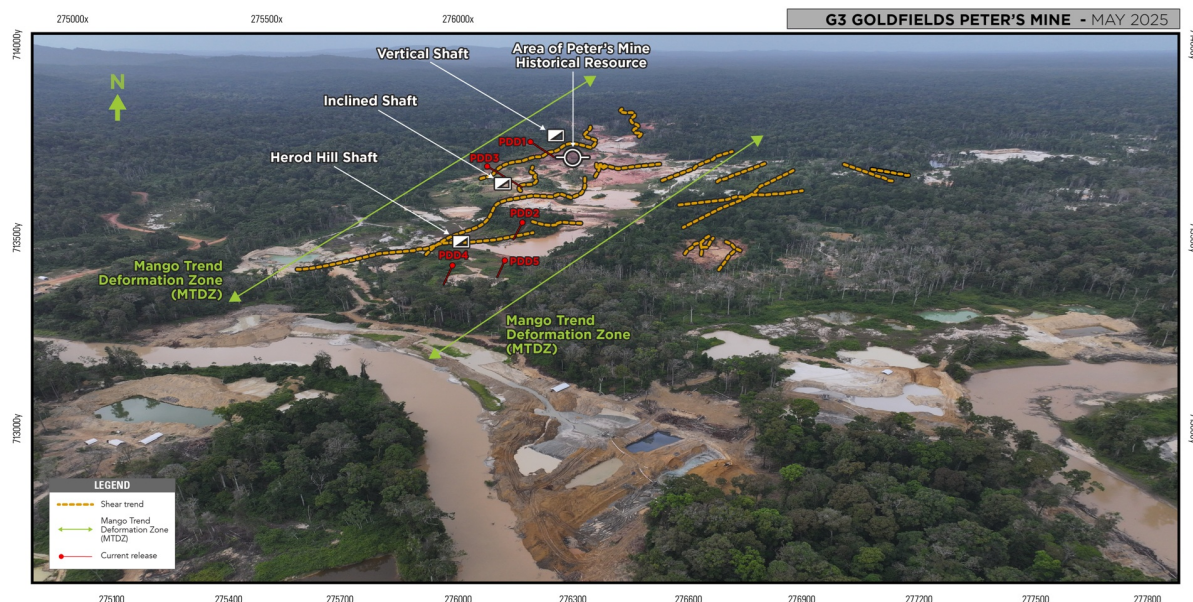
Diamond drill holes PDD1 and PDD3 explored the area between the historical main shaft area and the incline shaft area. Both drill holes intercepted significant widths of near surface gold mineralisation. Notably, hole PPD1 returned 5 g/t Au over 16.5 meters within a much broader zone of mineralisation which returned 1.5 g/t Au over 76 metres.

**FIGURE 2 – Mango Trend Deformation Zone Geology**



Holes PDD4 and PDD5 targeted high grade quartz floats mapped and sampled in the historic Herolds Hill area. Hole PDD4 returned a low-grade hit of 0.4 g/t over 24.8 meters from near surface whilst hole PDD5 had a high-grade intercept of 12.5 g/t Au over 3 meters from 147 meters downhole. G2 is currently planning a significant drill program for the Peters Mine district.

**FIGURE 3 – Drone Image of the MTDZ**



**Dan Noone, G2 CEO, stated,**

*"The Peters Mine and greater Puruni district have been among Guyana's most prolific goldfields for over a century.*

*"Despite its storied history, the area remains remarkably unexplored, and our initial results demonstrate the considerable potential of the region."*

[To View G2 Goldfield's historical news, please click here](#)

[The live Spot gold price can be found HERE](#)

=====

**City Investors Circle is based in the financial district in  
the City of London**

We present interesting and exciting junior mining companies listed on the ASX and TSX stock exchanges to a group of city professionals, and private investors, all of whom are active investors with a mandate to invest in junior mining companies.

Our audience is selected and invited individually to ensure interest and relevance for the presenting company.

Meetings are non deal, small group, highly focused and engaged, with a lively Q and A to follow the main presentation.

We create awareness, and maintain interest in presenting companies by disseminating their future news to our entire investor group via email, social media, and our Monthly Review newsletter.

If you wish to present to our select group of active mining investors, please email [andrew@city-investors-circle.com](mailto:andrew@city-investors-circle.com)

=====

**This website is not sponsored, we  
are truly independent, and will  
always remain so**

Companies featured here have either presented to the Circle in London, or have been selected because they are considered to

have interesting projects, in good jurisdictions, run by an experienced management team.

All information used in the preparation of this communication has been compiled from publicly available sources that we believe to be accurate and reliable, however, we cannot, and do not, guarantee the accuracy or completeness of this.

*These articles are for awareness and informational purposes only, and are not recommendations in any form. Always consult an investment professional.*

## **Disclosure**

**At the time of writing the author is not invested in G2 Goldfields**

**To read our full terms and conditions, please click [HERE](#)**