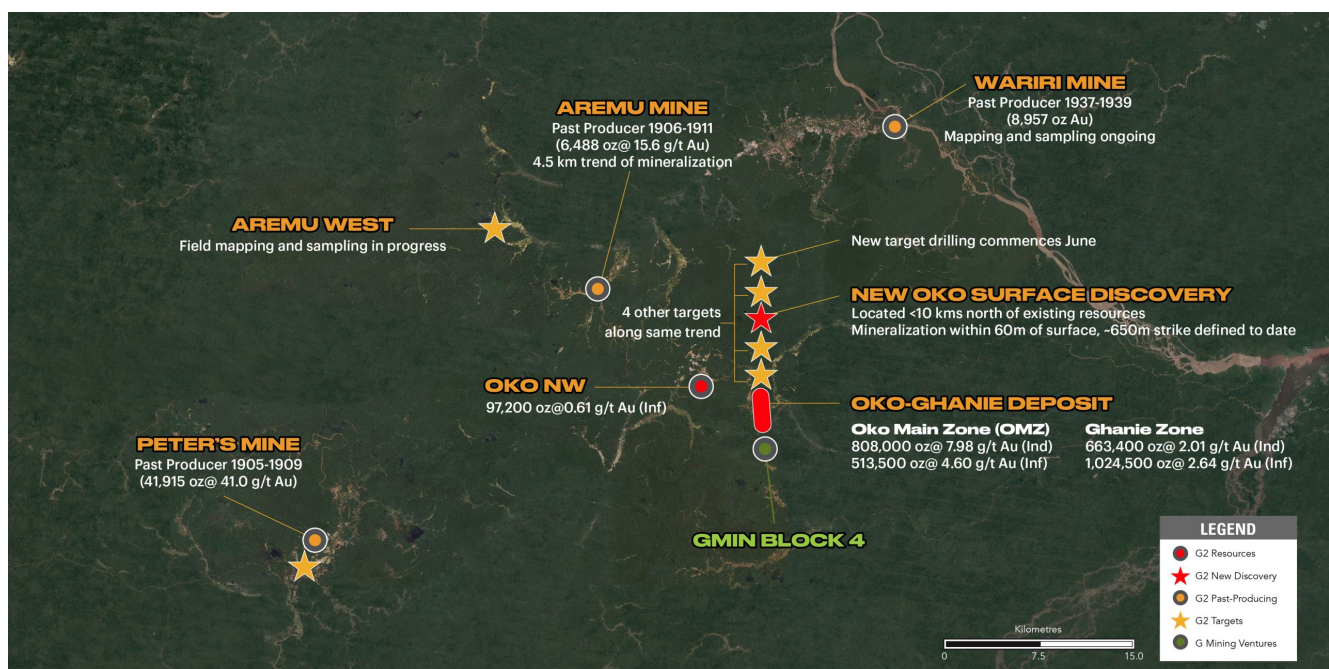


G2 Drills Multiple Near Surface Intercepts in New Oko Discovery Area

G2 Goldfields (TSX: GTW0)

Announced new assay results from the Company's ongoing drilling program in the greater OKO-AREMU district, Guyana.

Hole AMD18 returned 65m @ 1.5 g/t Au & 9.7m @ 3.1 g/t Au.



G2 Goldfields project location, note the proximity to G Mining's Block 4 at the bottom of the plan. – Credit G2 Goldfields



	G2 Goldfields	TSX: GTW0
	Stage	Development + Exploration
	Metals	Gold
	Market cap	C\$688 m @ C\$2.88
	Location	Guyana
	Website	https://g2goldfields.com

**G2 Drills Multiple Near
Surface Intercepts in New Oko
Discovery Area, Significant**

Sulphide Mineralization Encountered in Deeper Drill Holes

TORONTO, June 09, 2025 (GLOBE NEWSWIRE) –**G2 Goldfields Inc.** (“G2” or the “Company”) (TSX: GTWO; OTCQX: GUYGF) announces new assay results from the Company’s ongoing drilling program in the greater OKO-AREMU district, Guyana.

G2 currently holds exploration rights to 83,967 acres in the district and the New Oko Discovery Area represents the third significant gold discovery on the Company’s holdings.

Drill results within this release are part of an ongoing program from a new discovery initially announced in March (see press releases dated March 18, April 1, and April 28, 2025 available on SEDAR+ and the Company’s website) which lies 10km north of its existing gold resources at the Oko-Ghanie Deposit (**1.5 million ounces indicated** at 3.40 g/t Au and **1.6 million ounces inferred** at 2.48 g/t Au).

Multiple gold targets have been delineated north of existing resources along a 15km trend in which the Company has stationed four active drill rigs.

Highlights

- Hole AMD18 returns 65m @ 1.5 g/t Au & 9.7m @ 3.1 g/t Au
- Hole AMD23 returns 52m @ 0.9 g/t Au
- Hole AMD25 intercepts 70.5m @ 1.8 g/t Au
- New Oko discovery total strike length of 630m; remains

open in all directions

Boaz Wade, V.P. Exploration, stated

“The latest results confirm the continuity of gold mineralization down-dip of the host structure, and along strike to the northeast.

“Within the consistent broad intercepts along the shear, coherent zones of higher-grade begin to indicate the potential of plunging mineralized shoots that are still open at depth.

“Extensions of these higher-grade zones at depth and shallow strike extensions to the southwest will be the focus of the next phase of drilling, as we continue to expand this new, exciting discovery.”

—

[To View G2 Goldfield's historical news, please click here](#)

[The live Spot gold price can be found HERE](#)

=====

City Investors Circle is based in the financial district in the City of London

We present interesting and exciting junior mining companies listed on the ASX and TSX stock exchanges to a group of city professionals, and private investors, all of whom are active investors with a mandate to invest in junior mining companies.

Our audience is selected and invited individually to ensure interest and relevance for the presenting company.

Meetings are non deal, small group, highly focused and engaged, with a lively Q and A to follow the main presentation.

We create awareness, and maintain interest in presenting companies by disseminating their future news to our entire investor group via email, social media, and our Monthly Review newsletter.

If you wish to present to our select group of active mining investors, please email andrew@city-investors-circle.com

=====

**This website is not sponsored, we
are truly independent, and will
always remain so**

Companies featured here have either presented to the Circle in London, or have been selected because they are considered to have interesting projects, in good jurisdictions, run by an experienced management team.

All information used in the preparation of this communication has been compiled from publicly available sources that we believe to be accurate and reliable, however, we cannot, and do not, guarantee the accuracy or completeness of this.

These articles are for awareness and informational purposes only, and are not recommendations in any form. Always consult an investment professional.

Disclosure

At the time of writing the author is not invested in G2 Goldfields

To read our full terms and conditions, please click [HERE](#)