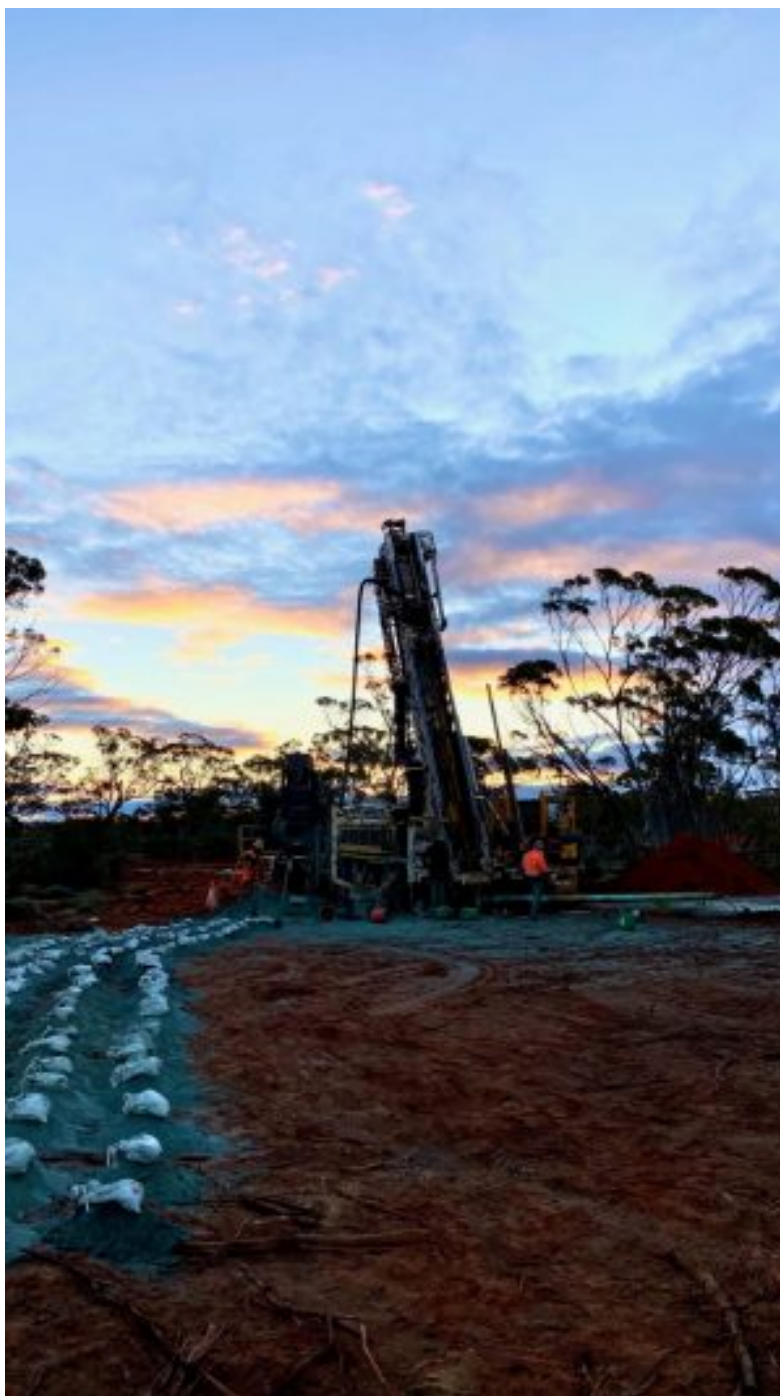


Lefroy Exploration Intersects High-Grade Gold at Burns

[Lefroy Exploration \(ASX: LEX\)](#)

Reported on drilling results targeting the high-grade core of the Burns Gold Deposit. Burns lies within the Company's Lefroy Gold Project located in the Kambalda-Kalgoorlie gold district of Western Australia.



Lefroy Exploration – Burns RC
drilling, August 2022

| | | |
|--|-------------------------------|-----------------|
| | Lefroy Exploration | ASX: LEX |
|--|-------------------------------|-----------------|

| | | |
|--|-------------------|--|
| | Stage | Exploration |
| | Metal | Gold |
| | Market cap | A\$63 m @ 26.5 cents |
| | Location | Kalgoorlie, Western Australia |
| | Website | www.lefroyex.com |

Lefroy Exploration Drilling confirms High-Grade gold zone at Burns Gold Deposit

8 January 2026

Lefroy Exploration Limited (“Lefroy” or “the Company”) (ASX: LEX) reports on drilling results targeting the high-grade core of the Burns Gold Deposit. Burns lies within the Company’s Lefroy Gold Project located in the Kambalda-Kalgoorlie gold district of Western Australia.

The Burns Gold Deposit contains an MRE of 42.96 Mt @ 0.36 g/t Au for 497,472 ounces (Indicated 32.31 Mt @ 0.38 g/t Au for 394,308 oz. Inferred 10.65 Mt @ 0.30 g/t Au for 103,165 oz).

Inclusive within this resource is Burns High-Grade which contains 4.22 Mt @ 1.18 g/t Au for 159,285 ounces (Indicated

4.11 Mt @ 1.19 g/t Au for 157,215 oz. Inferred 0.1 Mt @ 0.63 g/t Au for 2,070 oz).

HIGHLIGHTS

- Diamond drilling results confirm the high-grade core of the Burns Gold Deposit with significant intersections within LEFD010 including:
 - o 20.87m @ 2.69 g/t Au from 131.13m, incl 3.87m @ 7.09 g/t Au from 132.54m
 - o 6.4m @ 2.59 g/t Au from 191m, incl 0.93m @ 10.60 g/t Au from 196.07m
- An additional metallurgical reverse circulation (RC) drill hole (LRR026) targeting the high-grade oxide gold zone returned exceptional intersections including:
 - o 30m @ 5.76 g/t Au from 24m, incl 5m @ 17.3 g/t Au from 44m, and
 - o 7m @ 1.15 g/t Au from 71m, incl 2m @ 2.9 g/t Au from 76m
- RC drilling along strike of the defined Burns gold resource has intersected additional shallow zones of significant mineralisation to the north, including:
 - o 5m @ 1.60 g/t Au from 79m, incl 1m @ 5.31 g/t Au from 83m in LRR029, and
 - o 7m @ 0.66 g/t Au from 30m, incl 2m @ 1.16 g/t Au from 32m in LRR027
- Metallurgical results are expected to be received by the end of January.

LEFROY CEO, GRAEME GRIBBIN, COMMENTED:

“The significant near-surface gold assay results returned from the recently completed Diamond and RC metallurgical drilling programs at Burns truly is a reminder of the exceptional nature of the high-grade core of the Burns Central deposit.

“Along with advancing the exploration upside along strike, we look forward to incorporating the pending metallurgical test work results, expected in late January, to advance final development option for Burns, as we seek to unlock a second gold production pathway for the Company.”

[To read the full news release, please click HERE](#)

--

[To view the latest share price and chart, please click HERE](#)

[To View Lefroy Exploration's historical news, please click here](#)

[The live gold price can be found HERE](#)

=====

City Investors Circle is based in the financial district in the City of London

We present interesting and exciting junior mining companies listed on the ASX and TSX stock exchanges to a group of city professionals, and private investors, all of whom are active investors with a mandate to invest in junior mining companies.

Our audience is selected and invited individually to ensure interest and relevance for the presenting company.

Meetings are non deal, small group, highly focused and engaged, with a lively Q and A to follow the main presentation.

We create awareness, and maintain interest in presenting companies by disseminating their future news to our entire investor group via email, social media, and our Monthly Review newsletter.

If you wish to present to our select group of active mining investors, please email andrew@city-investors-circle.com

=====

This website is not sponsored, we are truly independent, and will

always remain so.

Companies featured here have either presented to the Circle in London, or have been selected because they are considered to have interesting projects, in good jurisdictions, run by an experienced management team.

All information used in the preparation of this communication has been compiled from publicly available sources that we believe to be accurate and reliable, however, we cannot, and do not, guarantee the accuracy or completeness of this.

These articles are for awareness and informational purposes only, and are not recommendations in any form. Always consult an investment professional.

Disclosure

At the time of writing the author holds shares in Lefroy Exploration

To read our full terms and conditions, please click [HERE](#)

