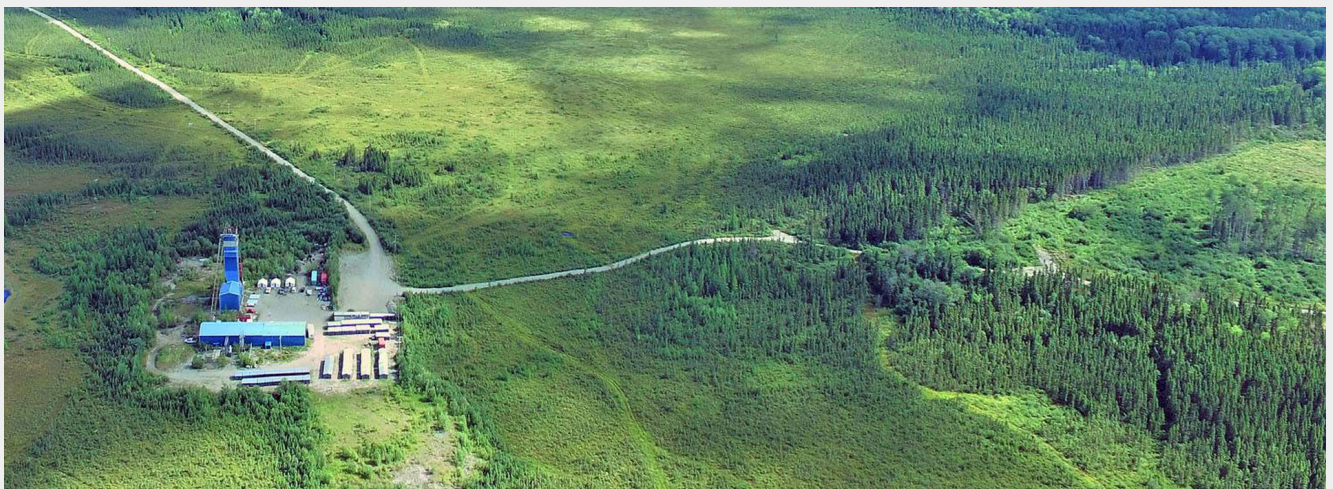


# Maple Gold Mines Adds a Second Rig at Douay

**Maple Gold Mines Ltd. (TSX.V: MGM)**

Announced that the 50/50 joint venture between the Company and Agnico Eagle Mines Ltd. has added a second rig to the JV's Autumn 2021 drill program at the Douay Gold Project in Québec, Canada.

Maple Gold	TSX.V: MGM
Stage	Exploration
Metals	Gold
Market cap	C\$109 m @ 32.5c
Location	Quebec, Canada



Maple Gold Douay Mine, Abitibi Gold Belt, Quebec

# MAPLE GOLD ADDS A SECOND DRILL RIG AT DOUAY, PREPARES FOR PHASE I DRILLING AT EAGLE, AND ANNOUNCES BOARD CHANGES

Vancouver, British Columbia—(Newsfile Corp. – December 14, 2021) – **Maple Gold Mines Ltd. (TSX.V: MGM) (OTCQB: MGMLF) (FSE: M3G)** (“**Maple Gold**” or the “**Company**”) is pleased to announce that the 50/50 joint venture (the “JV”) between the Company and Agnico Eagle Mines Limited has added a second rig to the JV’s Autumn 2021 drill program at the Douay Gold Project (“Douay”) (see news from November 15, 2021) in Québec, Canada.

In addition, a planned Phase I drill program at the Company’s 100%-controlled Eagle Mine Property (“Eagle”) ([see HERE](#)) is now expected to commence in January 2022 following a short holiday break.

The Company is also pleased to appoint veteran entrepreneur and current Maple Gold board director Michelle Roth as Independent Non-Executive Chair.

## Maple Gold Mines management comments

*“We are pleased to have secured a second rig to accelerate completion of the Autumn 2021 drill program and in*

*anticipation of ramping up our exploration activities in Q1 2022*

*“It is an exciting time for Maple Gold with two rigs now available to complete up to 20,000 meters of planned drilling across our ~400 km<sup>2</sup> property package, including testing high priority targets at Eagle in a matter of weeks.*

*“I would also like to welcome Michelle Roth as the Company’s next Chairperson, while thanking Sean Charland for having served so ably in that role since 2020.*

*“Michelle’s extensive experience across both the private and public sectors strengthens our senior leadership and corporate governance at a key inflection point in the Company’s growth trajectory.”*

**Matthew Hornor, President and CEO of Maple Gold Mines.**

## **Autumn 2021 Drilling Update**

The Autumn 2021 drill holes at Douay (see Figure 1 for hole locations) are primarily step-out targets designed to test the strike continuity and expansion potential of some of the better intercepts from recent drill programs in the Nika, Central and 531 Zones.

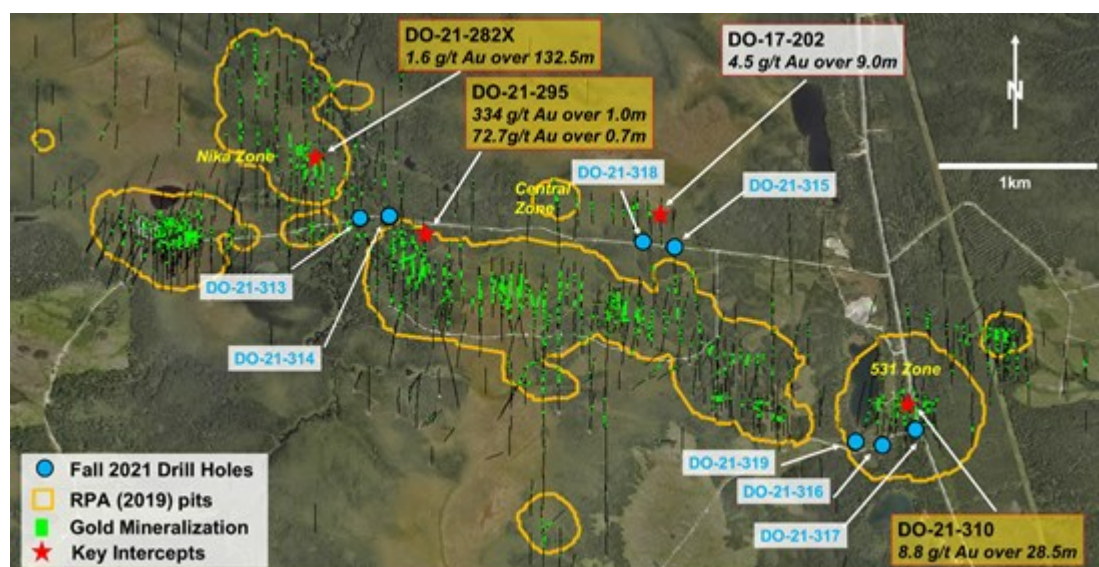
The first rig, which commenced drilling in early November, has already completed drill holes D0-21-313 (Nika Zone), D0-21-315 (Central Zone), D0-21-316 and D0-21-317 (both in the 531 Zone), and is currently drilling D0-21-319 (531 Zone).

The second rig has completed D0-21-318 (Central Zone) and is currently drilling D0-21-314 (Nika Zone).

A total of 2,661 metres (“m”) have been drilled out of 2,750 m planned as part of the Autumn 2021 drill program. The first 845 samples, including all of drill hole D0-21-313 in the Nika Zone, were shipped to ALS Labs on November 26, 2021.

Given the encouraging observations from initial drill core, the second rig has been mobilized to continue testing additional step-out targets as part of the Autumn 2021 drill program at Douay.

Of particular focus are: 1) mineralized horizons extending to the southeast from this year’s 1.6 g/t gold (“Au”) over 132 m intercept in the Nika Zone (see news from May 26, 2021); 2) areas down- and up-plunge from this year’s 8.8 g/t Au over 28.5 m intercept in the 531 Zone (see news from September 9, 2021); and 3) over 700 m of undrilled strike extending to the east-southeast of the Central Zone as currently defined.



**Figure 1:** Drill hole locations for Autumn 2021 drill program at Douay

To view an enhanced version of this graphic, please [click HERE](#)

## **Phase I Drilling at Eagle**

Phase I drilling at Eagle is now expected to commence in January 2022 following a short holiday break. Initial Eagle drill permits have been received with additional permit requests pending.

The Company expects to keep one drill rig in the Eagle area to complete the Phase I drill program, after which it will be available to commence drilling in the Telbel mine area.

Additional details on the Phase I drill program at Eagle and the JV's planned Winter 2022 drill campaign will be released in the coming weeks.

## **New Independent Non-Executive Chair**

**Michelle Roth** has served as an Independent Director of Maple Gold since November 2020 and currently serves as Chair of both the Audit and Nominating & Corporate Governance Committees as well as a member of the Compensation Committee.

She is the founder and CEO of Roth Investor Relations, which provides shareholder engagement solutions to a worldwide client base including mining industry clients with operations in North America, Australia, Africa, Europe and South America.

Ms. Roth also acts as a strategic advisor to Nova Royalty and to a privately held cell tower infrastructure / IT managed services company, where she has advised on growth opportunities during the pandemic.



## About Maple Gold Mines

Maple Gold Mines Ltd. is a Canadian advanced exploration company in a 50/50 joint venture with Agnico Eagle Mines Limited to jointly advance the district-scale Douay and Joutel gold projects located in Quebec's prolific Abitibi Greenstone Gold Belt.

In addition, the Company holds an exclusive option to acquire 100% of the Eagle Mine Property.

[For brevity, this summary has been redacted, to read the full news release, please click HERE](#)

=====

## City Investors Circle is based in the financial district in the City of London

We present interesting and exciting junior mining companies listed on the ASX and TSX stock exchanges to a group of city professionals, and private investors, all of whom are active investors with a mandate to invest in junior mining companies.

Our audience is selected and invited individually to ensure interest and relevance for the presenting company.

Meetings are non deal, small group, highly focused and engaged, with a lively Q and A to follow the main presentation.

We create awareness, and maintain interest in presenting companies by disseminating their future news to our entire investor group via email, social media, and our Monthly Review newsletter.

If you wish to present to our select group of active mining investors, please email [andrew@city-investors-circle.com](mailto:andrew@city-investors-circle.com)

=====

**This website is not sponsored, we are truly independent, and will always remain so.**

Companies featured here have either presented to the Circle in London, or have been selected because they are considered to have interesting projects, in good jurisdictions, run by an experienced management team.

All information used in the preparation of this communication has been compiled from publicly available sources that we believe to be accurate and reliable, however, we cannot, and do not, guarantee the accuracy or completeness of this.

***These articles are for awareness and informational purposes only, and are not recommendations in any form. Always consult an investment***

*professional.*

## ***Disclosure***

At the time of publishing the author holds shares in Orla Mining, bought in the market at the prevailing price on the day of purchase.

**To read our full terms and conditions, please click [HERE](#)**